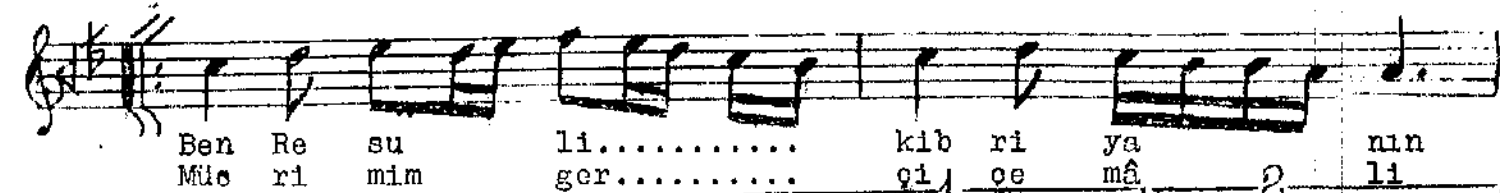
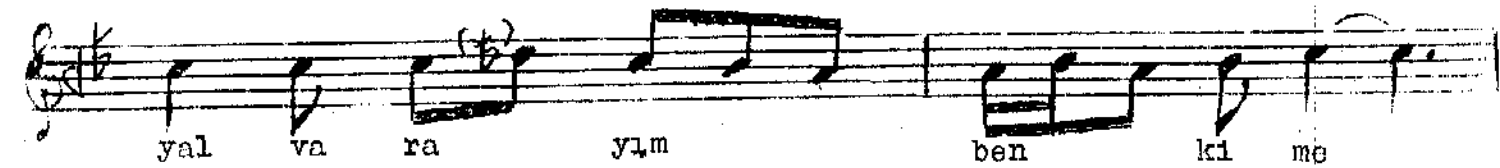
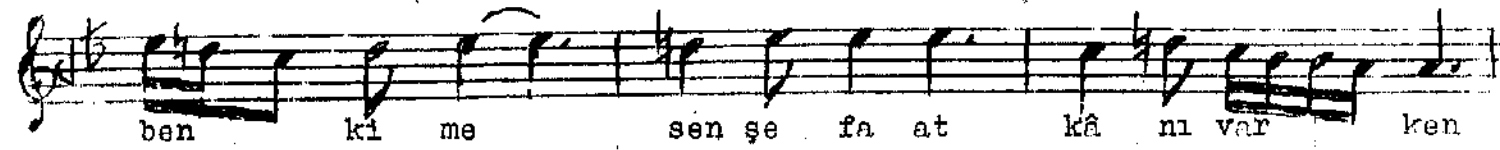
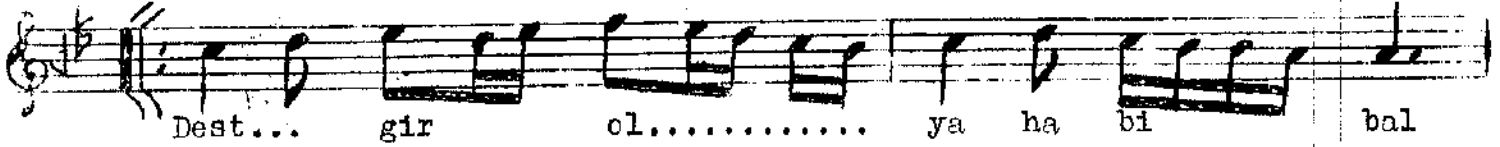
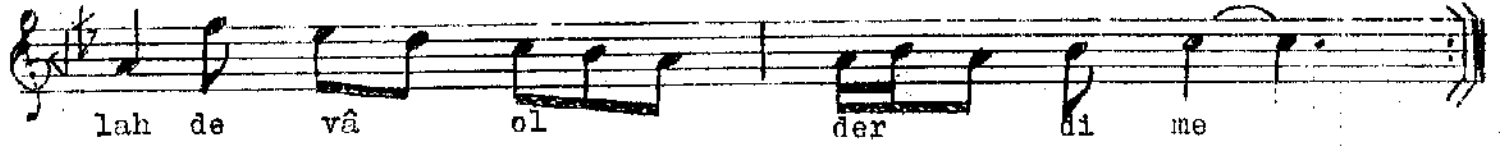


SABÂ ZEMZEME İLÂHÎ

Uslu: MÜSEMME

Beste: ZEKÎ ALTIN
Söz: ALÎ ULVÎ KURUCU



Derdi-men dim Yâ Resulâllah devâ ol derdime
Dest gir-ol yâ Habiballah bu âsî mücrime
Sen şefaât kâ nı varken yalvarayım ben kime
Ben Resulî kibriyanın bülbüli nâ laniyım
Mücrimim gerçi oemâli Müctebâ hayrânıyım.